



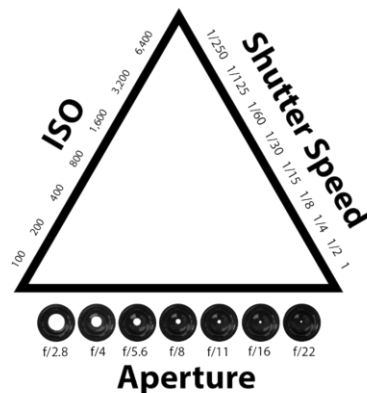
The Exposure Triangle

By Val Sleger

This is not be the first article we've shared here about the all-important exposure triangle, and it probably won't be the last. A quick review is helpful not only in general, but it will also help you more deeply understand why it is important to know how to change all three "legs" of the triangle when it comes to listening to the November presentation on camera settings you should know how to change.

The Three Legs

- Aperture
- Shutter Speed
- ISO



Aperture determines the amount of light that is allowed to hit the camera's sensor. The aperture is illustrated by a number labeled as an f/stop. Lower f/stop numbers let in more light, and produce a shallow depth of field, which can result in an often desirable out-of-focus background. Higher f/stop numbers let in less light, but offer a deeper depth of field, so more of the image will be in focus from front to back.

Shutter speed determines how long the light is allowed to hit the camera's sensor. A slow shutter speed allows in more light, because light will hit the sensor for a longer time. Slow shutter speeds can introduce blur, which is typically undesirable unless you are interested in creating "silky" water or dramatic-looking clouds. Faster shutter speeds can stop motion, but the shutter is open for only a very short period of time, so the amount of light that hits the sensor will be reduced.

ISO determines the sensitivity of the sensor to light. On a bright day, or when shooting with a flash, you can use a low ISO number and have a good exposure. On a more dreary day, or at dawn or dusk, or when shooting indoors or under a leafy tree, there is less light, so you may select a higher ISO number to ensure the proper exposure.

(Continued on page 2)

Exposure Triangle (continued)

Today's cameras have automatic, semi-automatic, and fully manual modes. With Auto mode, you compose the image and the camera will select an ISO, aperture, and shutter speed that will correctly expose the image.

Aperture and Shutter Speed modes are semi-automatic. You control the settings for one of the three legs (either Aperture or Shutter Speed), and the camera will set the ISO and the remaining leg to produce the correct exposure. The table below illustrates this.

Mode Nikon/Canon	You set	Camera sets	Why choose this mode?
A/Av (Aperture)	Aperture	Shutter Speed, ISO	You want to determine the depth of field (useful for landscapes, architecture, or portraits)
S/Tv (Shutter speed)	Shutter speed	Aperture, ISO	You want to control the shutter speed (fast for moving subjects, slow for dramatic water or skies, or for low light)
Auto/P A+/P	Nothing	Shutter speed, aperture, ISO	Set and forget; learn which settings to use based on camera selection
M (Manual)	Shutter speed, aperture, ISO	Nothing	Full control over all three legs of the triangle



With the semi-automatic modes, if you change one setting on the leg of the triangle, the camera will automatically change the other two legs to maintain good exposure.

There are other modes and dials that determine the quality of your exposure, and we'll talk about these at the November meeting. See you there!

It's Challenge Time!

Each month, we're posting lists of terms to get you thinking about how you can make images that fit the themes posted. Some are straightforward, while others are more conceptual. Either way, having prompts can help you focus your photography and give you a reason to get out and shoot.

Below are the lists for November (current photos showcased here and at this month's meeting), and December (photograph this month and they will be showcased at next month's meeting and in the December newsletter).

Please consider participating! It's a fun, no-stress way to keep up your photography skills and your eye for composition. Feel free to photograph one of each word, several of one word, or mix and match. We love seeing what everyone is working on! **Send your photos to:** azval.sleger@gmail.com. **Please submit no more than 10 photos.**

November Word List

Trail, Road, or Street
Same subject – one shot landscape and one shot portrait
Song: Honey, I'm Good (by Andy Grammer)
Orange or Rust

December

Holiday
White
Song: Silver Bells
Same subject, three apertures (Set up a small scene, or find a naturally-occurring scene. Stay the same distance from the scene and shoot the scene with three different aperture settings. Jot down the settings to submit with your photos.

Meeting Schedule

Meetings are held on the 3rd Thursday of the month at the Sierra Vista Police Station Training Room, 911 Coronado, Sierra Vista. Meetings begin at 4 PM. This month, Val Sleger will be presenting on the topic: Ten Camera Settings Every Photographer Should Know How to Change. **Hands-on topic. Bring your camera and your owner's manual if you have one.**

Officers

President: Mark Hanna
Vice-President & Program Coordinator: Bob Luce
Secretary: Joyce Genske
Treasurer: Francie Hills

Have an idea for a meeting topic? Let one of the officers know!

Share your Internet Finds with Us!

In the market for some new, or new-to-you gear? Here are five reputable websites for researching and purchasing equipment.

B&H Photo: <https://www.bhphotovideo.com/>

Adorama: <https://www.adorama.com/>

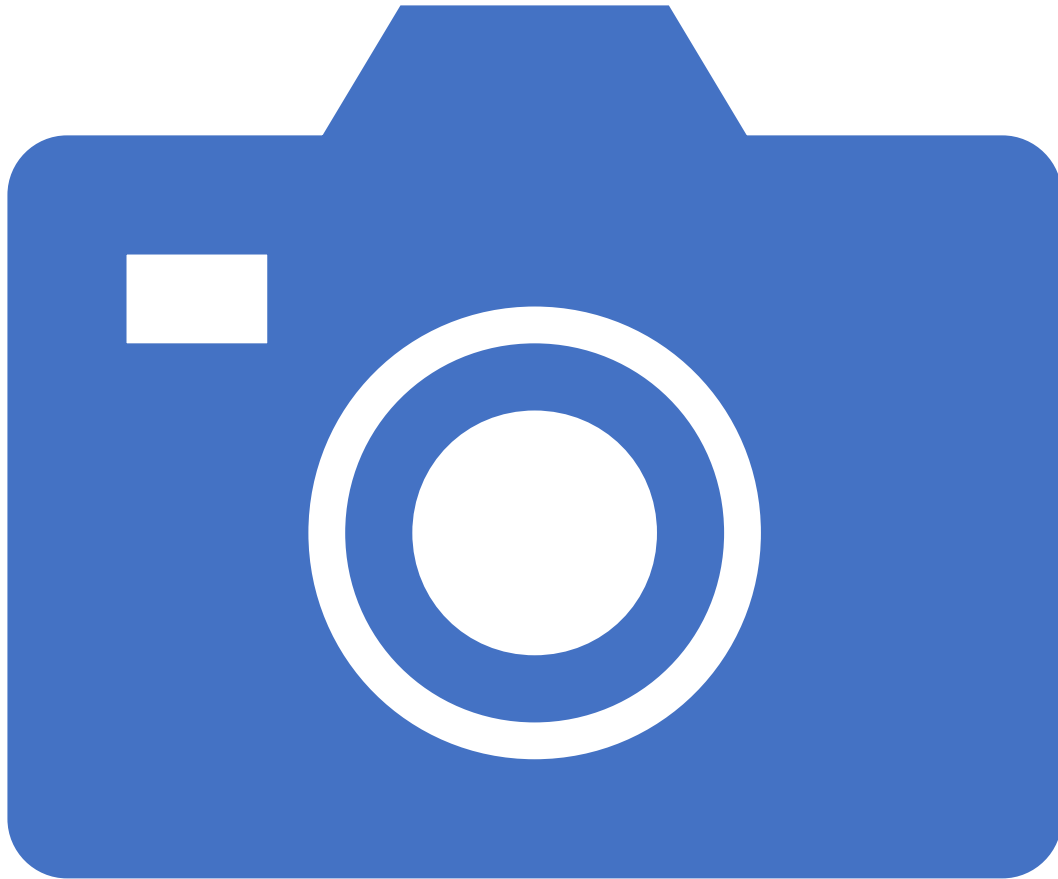
Nikon, Canon, Sony (visit the website of each)

BestBuy: <https://www.bestbuy.com/>

MPB: <https://www.mpb.com/en-us> Good place for quality used equipment. They also buy cameras, lenses, and accessories

Digital Photography Review <https://www.dpreview.com/>

Articles, reviews and forums for all things photography



Member Photos

We love to see your photos – even if you aren't looking for challenge words. We showcase them in the newsletter, and you are encouraged to bring them to the meeting on a flash drive!

Joyce Genske sent in these photos.



October
Challenge word:
Orange



October Challenge word:
Song – Honey, I'm Good

Ava Englund sent in these photos from the August word list.



Black



Black



Ava Englund sent in these images for the November Word List.



Song: Honey, I'm Good



Rust



Rust



Rust

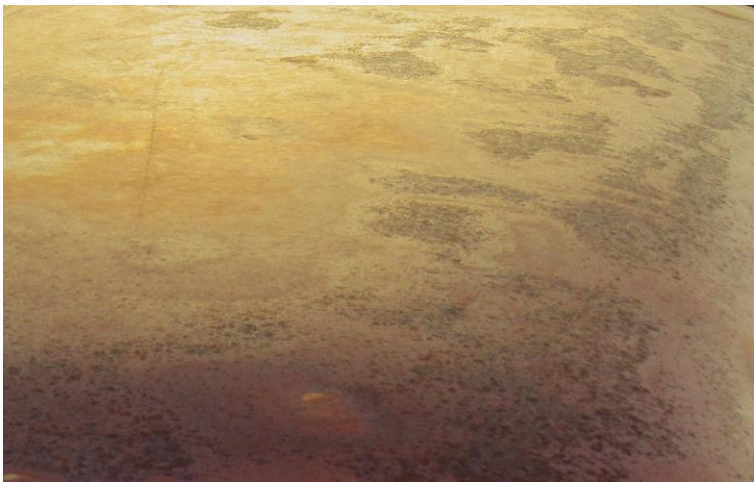
Ava Englund sent in these photos from the November word list.



Orange



Orange



Rust

Ava Englund sent in these photos from the November word list.



Trail, **Road**, Street



Same image: Landscape



Same image: Portrait